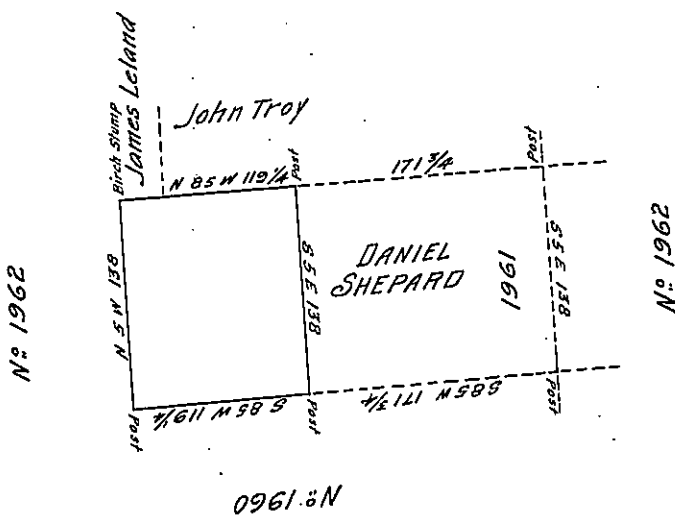


A draught of a tract of Land Situated in the 10<sup>th</sup> Donation District ~~in~~ Amity township, Erie County, on the waters of French Creek No 1961 Surveyed March 18<sup>th</sup> 1828 for Mason Shepard and Daniel Shepard by virtue of the actual settlement residence and improvement of said Mason Shepard and containing 236 acres & 132 perches and allowance &c

Wilson King, D.S.



A draught of part of Donation tract No 1961 in the tenth district of Donation Lands, Amity township, Erie Co. drawn by me from the draught and annexed field notes, entered in the Survey Book of Erie County by Wilson King Esq. D.S. a true copy of which draught and field notes are exhibited above. — And it does not appear from any document in the Deputy Surveyors office that the said part of tract 1961 containing Ninety Seven acres and allowance is claimed by any one except the said Mason Shepard,

Witness my hand the 25<sup>th</sup> day of November 1837

S. Skinner, D.S.

To John Taylor Esq.  
S. G.

IN TESTIMONY that the above is a copy of the original remaining on file in the Department of Internal Affairs of Pennsylvania, made conformably to an Act of Assembly approved the 16th day of February, 1833, I have hereunto set my Hand and caused the Seal of said Department to be affixed at Harrisburg, this

twenty-second day of August 1907

*Henry Howard*  
Secretary of Internal Affairs.